

Please visit [www.roche.com.sg/pharma/rozlytrek](http://www.roche.com.sg/pharma/rozlytrek) for a printable version of this leaflet.

CAP-ROZ-2021 11-0

# Rozlytrek®

## Entrectinib



### 1. DESCRIPTION

#### 1.1 THERAPEUTIC / PHARMACOLOGIC CLASS OF DRUG

Antineoplastic agent, Tyrosine Kinase inhibitor

ATC Code: L01XE56

#### 1.2 TYPE OF DOSAGE FORM

Hard Capsule

Rozlytrek 100 mg are size 2 hard capsules with yellow opaque body and cap with “ENT 100” imprinted in blue on the body.

Rozlytrek 200 mg are size 0 hard capsules with orange opaque body and cap with “ENT 200” imprinted in blue on the body.

#### 1.3 ROUTE OF ADMINISTRATION

Oral

#### 1.4 STERILE / RADIOACTIVE STATEMENT

Not applicable

#### 1.5 QUALITATIVE AND QUANTITATIVE COMPOSITION

Active ingredient: entrectinib

Each 100 mg hard capsule contains 100 mg entrectinib.

Each 200 mg hard capsule contains 200 mg entrectinib.

#### Excipients

Capsule content: tartaric acid, lactose, hypromellose, crospovidone, microcrystalline cellulose, colloidal silicon dioxide, magnesium stearate.

Capsule shell: hypromellose, titanium dioxide (E171), yellow iron oxide (E172, for yellow opaque capsule shell – 100 mg hard capsule), FD&C yellow #6 (E110, for orange opaque capsule shell – 200 mg hard capsule).

Printing ink: shellac, propylene glycol, strong ammonia solution, FD&C blue #2 aluminium lake (E132).

### 2. CLINICAL PARTICULARS

#### 2.1 THERAPEUTIC INDICATION(S)

##### Solid tumors

Rozlytrek is indicated for the treatment of adult and pediatric patients 12 years of age and older, with neurotrophic tyrosine receptor kinase (*NTRK*) fusion-positive solid tumors without a known acquired resistance mutation, that are locally advanced, metastatic or where surgical resection is likely to result in severe morbidity, and who have progressed following prior therapies or have no satisfactory alternative treatments.

##### Non-small cell lung cancer (NSCLC)

Rozlytrek is indicated for the treatment of adult patients with *ROS1*-positive, locally advanced or metastatic NSCLC.

#### 2.2 DOSAGE AND ADMINISTRATION

##### General

##### Patient Selection

##### Solid Tumors

A validated assay is required for the selection of patients with *NTRK* fusion-positive locally advanced or metastatic solid tumors. *NTRK* fusion-positive status should be established prior to initiation of Rozlytrek therapy.

##### NSCLC

A validated assay is required for the selection of patients with *ROS1*-positive locally advanced or metastatic NSCLC. *ROS1*-positive status should be established prior to initiation of Rozlytrek therapy.

##### Dosage

Rozlytrek hard capsules can be taken with or without food, swallowed whole and must not be opened or dissolved.

##### Adults

The recommended dose of Rozlytrek for adults is 600 mg given orally, once daily (see section 3.2 *Pharmacokinetic Properties*).

##### Pediatric patients 12 years and older

The recommended dose of Rozlytrek for pediatric patients, 12 years and older, who have the ability to swallow capsules is 300 mg/m<sup>2</sup> orally, once daily (see Table 1). (See section 3.2 *Pharmacokinetic Properties*).

**Table 1: Recommended dosing for Pediatric patients 12 years and older**

Body surface area (BSA)	Once daily dose
0.81-1.10 m <sup>2</sup>	300 mg
1.11-1.50 m <sup>2</sup>	400 mg
≥ 1.51 m <sup>2</sup>	600 mg

##### Duration of Treatment

It is recommended that patients are treated with Rozlytrek until disease progression or unacceptable toxicity.

##### Delayed or Missed Doses

If a planned dose of Rozlytrek is missed, patients can make up that dose unless the next dose is due within 12 hours. If vomiting occurs immediately after taking a dose of Rozlytrek, patients may repeat that dose.

##### Dose Modifications

Management of adverse events may require temporary interruption, dose reduction, or discontinuation of treatment with Rozlytrek, based on the prescriber's assessment of the patient's safety or tolerability.

##### Adults

For adults, the dose of Rozlytrek may be reduced up to 2 times, based on tolerability. Table 2 provides general dose reduction advice for adult

patients. Rozlytrek treatment should be permanently discontinued if patients are unable to tolerate a dose of 200 mg once daily.

**Table 2: Dose Reduction Schedule for Adult patients**

Dose reduction schedule	Dose level
Starting Dose	600 mg once daily
First dose reduction	400 mg once daily
Second dose reduction	200 mg once daily

##### Pediatric Patients

Table 3 provides specific dose reduction advice for pediatric patients. For pediatric patients, the dose of Rozlytrek may be reduced up to 2 times, based on tolerability.

For some patients an intermittent dosing schedule is required to achieve the recommended reduced total weekly pediatric dose. Rozlytrek treatment should be permanently discontinued if patients are unable to tolerate the lowest reduced dose.

**Table 3: Dose Reduction Schedule for pediatric patients 12 years and older**

Starting Dose once daily	First dose reduction	Second dose reduction
300 mg	200 mg once daily	100 mg once daily
400 mg	300 mg once daily	200 mg, once/day for 5 days each week*
600 mg	400 mg once daily	200 mg once daily

\*5 days each week: Monday, Wednesday, Friday, Saturday, and Sunday

##### Dose Modifications for Specific Adverse Reactions

Recommendations for Rozlytrek dose modifications for adults and pediatric patients for specific adverse reactions are provided in Table 4. (See section 2.4.1 *Warnings and Precautions* and section 2.6 *Undesirable Effects*).

**Table 4: Recommended dose modifications for specified Adverse Drug Reactions for Adult and Pediatric Patients**

Adverse Drug Reaction	Severity*	Dose modification
<b>Anemia or Neutropenia</b>	Grade 3 or Grade 4	<ul style="list-style-type: none"> <li>Withhold Rozlytrek until recovery to ≤ Grade 2 or to baseline, then resume treatment at same dose level or reduced dose, as clinically needed.</li> </ul>
<b>Cognitive Disorders</b>	Grade ≥ 2	<ul style="list-style-type: none"> <li>Withhold Rozlytrek until recovery to ≤ Grade 1 or to baseline, then resume treatment at reduced dose.</li> <li>If event recurs, further reduce dose.</li> <li>For prolonged, severe, or intolerable events, discontinue as clinically appropriate.</li> </ul>
<b>Transaminase Elevations</b>	Grade 3	<ul style="list-style-type: none"> <li>Withhold Rozlytrek until recovery to less than or equal to Grade 1 or to baseline.</li> <li>Resume at same dose if resolution occurs within 4 weeks.</li> <li>Permanently discontinue if adverse reaction does not resolve within 4 weeks.</li> <li>Resume at a reduced dose for recurrent Grade 3 events that resolve within 4 weeks.</li> </ul>
	Grade 4	<ul style="list-style-type: none"> <li>Withhold Rozlytrek until recovery to less than or equal to Grade 1 or to baseline.</li> <li>Resume at reduced dose if resolution occurs within 4 weeks.</li> <li>Permanently discontinue if adverse reaction does not resolve within 4 weeks.</li> <li>Permanently discontinue for recurrent Grade 4 events.</li> </ul>
	ALT or AST elevation greater than 3 times ULN with total bilirubin elevation greater than 1.5 times ULN in the absence of cholestasis or hemolysis	<ul style="list-style-type: none"> <li>Permanently discontinue Rozlytrek.</li> </ul>
<b>Hyperuricemia</b>	Symptomatic or Grade 4	<ul style="list-style-type: none"> <li>Initiate urate-lowering medication</li> <li>Withhold Rozlytrek until improvement of signs or symptoms</li> <li>Resume Rozlytrek at same or reduced dose</li> </ul>
<b>Congestive Heart Failure</b>	Grade 2 or 3	<ul style="list-style-type: none"> <li>Withhold Rozlytrek until recovered to less than or equal to Grade 1</li> <li>Resume at reduced dose</li> </ul>
	Grade 4	<ul style="list-style-type: none"> <li>Withhold Rozlytrek until recovered to less than or equal to Grade 1</li> <li>Resume at reduced dose or discontinue as clinically appropriate</li> </ul>

<b>QT Interval Prolongation</b>	QTc 481 to 500 ms	<ul style="list-style-type: none"> <li>Withhold Rozlytrek until recovered to baseline</li> <li>Resume treatment at same dose</li> </ul>
	QTc greater than 500 ms	<ul style="list-style-type: none"> <li>Withhold Rozlytrek until QTc interval recovers to baseline</li> <li>Resume at same dose if factors that cause QT prolongation are identified and corrected</li> <li>Resume at reduced dose if other factors that cause QT prolongation are not identified</li> </ul>
	Torsade de pointes; polymorphic ventricular tachycardia; signs/symptoms of serious arrhythmia	<ul style="list-style-type: none"> <li>Permanently discontinue Rozlytrek</li> </ul>
<b>Other clinically relevant adverse reactions</b>	Grade 3 or 4	<ul style="list-style-type: none"> <li>Withhold Rozlytrek until adverse reaction resolves or improvement to Grade 1 or baseline</li> <li>Resume at the same or reduced dose, if resolution occurs within 4 weeks</li> <li>Consider permanent discontinuation if adverse reaction does not resolve within 4 weeks</li> <li>Permanently discontinue for recurrent Grade 4 events</li> </ul>
<b>Vision Disorders</b>	Grade 2 or above	<ul style="list-style-type: none"> <li>Withhold Rozlytrek until improvement or stabilization.</li> <li>Resume at same dose or reduced dose, as clinically appropriate.</li> </ul>

\*Severity as defined by National Cancer Institute Common Terminology Criteria for Adverse Events (NCI CTCAE)

##### Dose Modifications for Specific Drug Interactions

##### Concomitant strong or moderate CYP3A inhibitors:

##### Adults

The concomitant use of strong or moderate CYP3A inhibitors and Rozlytrek in adults should be avoided or limited to 14 days or less. If concomitant use of strong or moderate CYP3A inhibitors cannot be avoided, Rozlytrek dose should be reduced to 100 mg once daily for use with strong CYP3A inhibitors and to 200 mg once daily for use with moderate CYP3A inhibitors.

After discontinuation of the concomitant strong or moderate CYP3A inhibitors, Rozlytrek dose that was taken prior to initiating the strong or moderate CYP3A inhibitor can be resumed. A wash out period may be required for CYP3A4 inhibitors with long half-life. (See section 2.8 *Interactions with Other Medicinal Products and other forms of Interaction*).

##### Pediatric patients

The concomitant use of strong or moderate CYP3A inhibitors in pediatric patients should be avoided. (See section 2.8 *Interactions with Other Medicinal Products and other forms of Interaction*).

##### Concomitant CYP3A inducers:

Co-administration of Rozlytrek with CYP3A inducers in adult and pediatric patients should be avoided. (See section 2.8 *Interactions with Other Medicinal Products and other forms of Interaction*.)

#### 2.2.1 Special Dosage Instructions

##### Pediatric use

Pediatric patients must have the ability to swallow whole Rozlytrek capsules. Dosage for patients 12 years and older is based on body surface area (mg/m<sup>2</sup>) with a maximum daily dose of 600 mg (see Table 1 for pediatric dosing). The safety and efficacy of Rozlytrek in children below 12 years of age have not been established.

##### Geriatric use

No dose adjustment of Rozlytrek is required in patients ≥ 65 years of age. (See section 3.2.5 *Pharmacokinetics in Special Populations*).

##### Renal Impairment

No dose adjustment is required in patients with mild or moderate renal impairment. The safety and efficacy of Rozlytrek have not been studied in patients with severe renal impairment. (See sections 2.5 *Use in Special Populations* and section 3.2.5 *Pharmacokinetics in Special Populations*).

##### Hepatic Impairment

The safety and efficacy of Rozlytrek have not been studied in patients with hepatic impairment. (See section 2.5 *Use in Special Populations* and section 3.2.5 *Pharmacokinetics in Special Populations*).

##### Other Special Patient Populations

##### Ethnicity

No dose adjustment is necessary for patients of different ethnicities (see section 3.2.5 *Pharmacokinetics in Special Populations*).

### 2.3 CONTRAINDICATIONS

Rozlytrek is contraindicated in patients with a known hypersensitivity to entrectinib or any of the excipients.

### 2.4 WARNINGS AND PRECAUTIONS

#### 2.4.1 General

##### Congestive Heart Failure

Congestive heart failure (CHF) has been reported across clinical trials with Rozlytrek (see Table 5 in section 2.6.1 *Undesirable Effects*). These reactions were observed in patients with or without a history of cardiac disease and resolved upon treatment with diuretics and/or dose reduction/interruption of Rozlytrek.

For patients with symptoms or known risk factors of CHF, left ventricular ejection fraction (LVEF) should be assessed prior to initiation of Rozlytrek treatment. Patients receiving Rozlytrek should be carefully

monitored and those with clinical signs and symptoms of CHF, including shortness of breath or edema, should be evaluated and treated as clinically appropriate.

Based on the severity of CHF, Rozlytrek treatment should be modified as described in Table 4 in section 2.2 *Dosage and Administration*.

#### Cognitive Disorders

Cognitive disorders, including confusion, mental status changes, memory impairment, and hallucinations, were reported in clinical trials with Rozlytrek, (see section 2.6.1 *Undesirable Effects* for description of events). Patients should be monitored for signs of cognitive changes.

Based on the severity of the cognitive disorder, Rozlytrek treatment should be modified as described in Table 4 in section 2.2 *Dosage and Administration*.

Patients should be counseled on the potential for cognitive changes with Rozlytrek treatment. Patients should be instructed not to drive or use machines until symptoms resolve, if they experience symptoms of cognitive disorders. (See section 2.4.3 *Ability to drive and use machines.*)

#### Fractures

Rozlytrek increases the risk of fractures (see description of selected ADRs). Patients with signs or symptoms (e.g., pain, changes in mobility, deformity) of fractures should be evaluated promptly. In adult patients, some fractures occurred in the setting of a fall or other trauma to the affected area, while in pediatric patients fractures occurred in patients with minimal or no trauma. There are no data on the effects of Rozlytrek on healing of known fractures and the risk of occurrence of future fractures. In the majority of pediatric patients treatment was continued with Rozlytrek and the fracture healed.

#### QTc Interval Prolongation

QT interval prolongation has been observed in patients treated with Rozlytrek in clinical trials (see section 2.6.1 *Undesirable Effects*).

Use of Rozlytrek should be avoided in patients with congenital long QT syndrome and in patients taking medications that are known to prolong QT interval. Assessment of ECG at baseline and periodic monitoring of ECGs and electrolytes are recommended.

Based on the severity of QTc prolongation, Rozlytrek treatment should be modified as described in Table 4 in section 2.2 *Dosage and Administration*.

#### Embryo-fetal toxicity

Based on the findings in animal studies, Rozlytrek may cause fetal harm when administered to a pregnant woman. When administered to pregnant rats, Rozlytrek caused maternal toxicity and developmental toxicities at exposures 2.3-fold the human exposure by AUC at the recommended dose. (See section 3.3.4 *Reproductive toxicity*).

Female patients receiving Rozlytrek should be advised of the potential harm to the fetus. Female patients of reproductive potential, must use highly effective contraceptive methods during treatment and for 5 weeks following the last dose of Rozlytrek. (See section 2.5.1 *Females and Males of Reproductive potential*).

#### Hepatotoxicity

Among the 504 patients who received Rozlytrek, increased AST of any grade occurred in 43.3% of patients and increased ALT of any grade occurred in 38.4%. Grade 3 – 4 increased AST or ALT occurred in 3.3% and 3.1% of patients, respectively. Monitor liver tests, including ALT and AST, every 2 weeks during the first month of treatment, then monthly thereafter, and as clinically indicated. Withhold or permanently discontinue Rozlytrek based on the severity. If withheld, resume Rozlytrek at the same or reduced dose [see section 2.2 *Dosage and Administration*].

#### Hyperuricemia

Hyperuricemia has been observed in patients treated with Rozlytrek in clinical trials (see section 2.6.1 *Undesirable Effects*). Assess serum uric acid levels prior to initiating Rozlytrek and periodically during treatment. Monitor for signs and symptoms of hyperuricemia. Initiate treatment with urate-lowering medications as clinically indicated and withhold Rozlytrek treatment for signs and symptoms of hyperuricemia. Based on the severity of hyperuricemia, resume Rozlytrek at same or reduced dose upon improvement in signs and symptoms (see Table 4 in Section 2.2 *Dosage and Administration*).

#### Eye disorders

Visual disorders, including blurred vision, photophobia, diplopia and dry eyes, were reported in clinical trials with Rozlytrek (see section 2.6.1 *Undesirable Effects* for description of events). Patients should be counselled on the potential for visual changes with Rozlytrek treatment. If patients experience symptoms of vision disorders, they should be instructed not to drive or use machines until symptoms resolve. For patients with new visual changes, consider an ophthalmological evaluation. Based on the severity of visual changes, withhold Rozlytrek or modify treatment dosage as described in Table 4 in section 2.2. *Dosage and Administration*.

#### 2.4.2 Drug Abuse and Dependence

Not applicable.

#### 2.4.3 Ability to Drive and Use Machines

Rozlytrek may influence the ability to drive and use machines. Patients should be instructed not to drive or use machines until the symptoms resolve, if they experience cognitive adverse reactions, syncope, blurred vision, or dizziness, during treatment with Rozlytrek. (See section 2.4 *Warnings and Precautions* and section 2.6 *Undesirable effects*).

### 2.5 USE IN SPECIAL POPULATIONS

#### 2.5.1 Females and Males of Reproductive Potential

##### Fertility

See section 3.3.3 *Impairment of fertility*.

##### Pregnancy testing

Female patients of reproductive potential should have medically supervised pregnancy testing prior to initiating Rozlytrek therapy.

##### Contraception

Female patients of reproductive potential, must use highly effective contraceptive methods during treatment and for 5 weeks following the last dose of Rozlytrek.

Based on the potential for genotoxicity, male patients with female partners of child-bearing potential must use highly effective contraceptive methods during treatment and for 3 months following the last dose of Rozlytrek (See section 3.3.2 *Genotoxicity*).

#### 2.5.2 Pregnancy

Female patients of reproductive potential must be advised to avoid pregnancy while receiving Rozlytrek (see section 2.4 *Warnings and Precautions*). There is no available data on the use of Rozlytrek in pregnant women. Based on animal studies with entrectinib (see section 3.3 *Nonclinical Safety*) and its mechanism of action, Rozlytrek may cause fetal harm when administered to a pregnant woman. Patients receiving Rozlytrek should be advised of the potential harm to the fetus. Female patients should be advised to contact the doctor, should pregnancy occur.

#### Labor and Delivery

The safe use of Rozlytrek during labor and delivery has not been established.

#### 2.5.3 Lactation

It is not known whether entrectinib or its metabolites are excreted in human breast milk. No studies have been conducted to assess the effects of Rozlytrek on milk production or its presence in breast milk. As the potential for harm to the nursing infant is unknown, mothers should be advised to discontinue breast-feeding during treatment with Rozlytrek and for 14 days after the final dose.

#### 2.5.4 Pediatric Use

The safety and efficacy of Rozlytrek have been studied in pediatric patients. See section 2.4.1 *Warnings and Precautions*, 2.6.1 *Undesirable Effects*, *Clinical Trials* and section 3.1.2 *Clinical/Efficacy Studies*. In addition, use of Rozlytrek in pediatric patients 12 years and older is supported by extrapolation of evidence from clinical trials in adults, based on population pharmacokinetic data demonstrating similar drug exposure in adults and pediatric patients 12 years and older. See section 2.2.1 *Special Dosage Instructions*, section 3.1.2 *Clinical/Efficacy Studies*, and section 3.2.5 *Pharmacokinetics, Special Populations*.

Rozlytrek was associated with a higher incidence of skeletal fractures in the pediatric patients compared to adult patients. See section 2.4.1 *Warnings and Precautions* and 2.6.1 *Undesirable Effects, Clinical Trials*.

#### 2.5.5 Geriatric Use

No differences in safety or efficacy were observed between patients ≥ 65 years of age and younger patients. No dose adjustment is required in patients ≥ 65 years of age. See section 2.2.1 *Special Dosage Instructions* and section 3.2.5 *Pharmacokinetics, Special Populations*.

#### 2.5.6 Renal Impairment

No dose adjustment is required in patients with mild or moderate renal impairment based on population pharmacokinetic analysis. The safety and efficacy of Rozlytrek in patients with severe renal impairment have not been studied. See section 2.2.1 *Special Dosage Instructions, Renal Impairment* and section 3.2.5 *Pharmacokinetics, Special Populations*.

#### 2.5.7 Hepatic Impairment

The safety and efficacy of Rozlytrek in patients with hepatic impairment have not been studied. See section 2.2.1 *Special Dosage Instructions* and section 3.2.5 *Pharmacokinetics, Special Populations*.

### 2.6 UNDESIRABLE EFFECTS

#### 2.6.1 Clinical Trials

##### Summary of the safety profile

For the clinical development program of Rozlytrek, a total of 504 patients have received Rozlytrek in 4 clinical trials (ALKA, STARTRK-1, STARTRK-2 and STARTRK-NG). The safety of Rozlytrek was evaluated as integrated analyses of these 4 clinical trials. The median duration of exposure to Rozlytrek was 5.5 months.

The safety of Rozlytrek in adult patients has been evaluated in a total of 475 patients with *NTRK*-fusion positive, *ROS1*-positive or *ALK*-positive solid tumors, in studies ALKA, STARTRK-1, STARTRK-2.

The safety of Rozlytrek has been evaluated in 29 pediatric patients with solid tumors (27 patients enrolled in STARTRK-NG, and 2 patients enrolled in STARTRK-2). Of these, 1 patient was less than 1 year old, 21 patients were 2 to 11 years old, 7 patients were 12 to 17 years old.

Serious adverse reactions occurred in 39.9% of patients. The most frequent serious adverse reactions (≥ 2%) were pneumonia (4.0%), dyspnea (4.6%), pleural effusion (3.0%), pulmonary embolism (2.0%). Grade 3 or 4 adverse reactions occurred in 60.1% of patients; the most common (≥ 2%) were increased weight (7.3%), lung infection (6.0%), dyspnea (5.8%), fatigue/asthenia (5%), cognitive disorders (4.4%), hypoxia (2.4%), syncope (3%), pulmonary embolism (2.8%), pleural effusion (2.8%), diarrhoea (2.6%), urinary tract infection (2.6%), hypotension (2.4%), fractures (2.4%), and congestive heart failure (2.2%).

##### Tabulated summary of adverse drug reactions from clinical trials

Table 5 summarizes the adverse drug reactions (ADRs) occurring in adult and pediatric patients treated with Rozlytrek. Adverse drug reactions from clinical trials are listed by MedDRA system organ class. The following categories of frequency have been used: very common ≥1/10, common (≥1/100 to <1/10), uncommon (≥1/1,000 to <1/100), rare (≥1/10,000 to <1/1000), very rare (<1/10,000).

**Table 5: Summary of adverse drug reactions occurring in patients treated with Rozlytrek in clinical trials (integrated safety population)**

System Organ Class Adverse Reaction	Rozlytrek N=504		Frequency Category (All Grades)
	All Grades (%)	Grade ≥3 (%)	
<b>General Disorders and Administration Site Conditions</b>			
Fatigue <sup>14</sup>	45.0	5.0	very common
Edema <sup>6</sup>	37.3	1.4	very common
Pain <sup>7</sup>	24.4	1.6	very common
Pyrexia	20.0	0.8	very common
<b>Gastrointestinal Disorders</b>			
Constipation	42.9	0.4	very common
Diarrhea	33.5	2.6	very common
Nausea	32.1	0.8	very common
Vomiting	23.2	1.2	very common
Abdominal pain	11.1	0.6	very common
Dysphagia	10.1	0.4	very common
<b>Nervous System Disorders</b>			
Dysgeusia	42.3	0.4	very common
Dizziness <sup>5</sup>	39.7	1.2	very common
Dysaesthesia <sup>3</sup>	29.0	0.2	very common
Cognitive Disorders <sup>1</sup>	24.2	4.4	very common
Headache	17.5	1.0	very common

Peripheral Neuropathy <sup>2</sup>	Sensory	15.7	1.0	very common
Ataxia <sup>4</sup>		15.7	0.8	very common
Sleep disturbances <sup>6</sup>		13.5	0.4	very common
Mood disorders <sup>17</sup>		9.1	0.6	common
Syncope		4.6	3.0	common
<b>Respiratory Disorders</b>				
Dyspnea		27.0	5.8*	very common
Cough		21.4	0.6	very common
<b>Blood Disorders</b>				
Anemia		28.2	9.7	very common
Neutropenia <sup>10</sup>		11.3	4.4	very common
<b>Metabolism and Nutritional Disorders</b>				
Weight increased		26.4	7.3	very common
Decreased appetite		11.9	0.2	very common
Hyperuricemia		9.1	1.8	common
Dehydration		7.9	1.0	common
Tumor lysis syndrome		0.2	0.2*	uncommon
<b>Renal and urinary disorders</b>				
Blood creatinine increased		25.4	0.6	very common
<b>Musculoskeletal Disorders</b>				
Myalgia		19.6	0.6	very common
Arthralgia		19.0	0.6	very common
Muscular weakness		12.3	1.2	very common
Fractures <sup>11</sup>		6.2	2.4	common
<b>Hepatobiliary Disorders</b>				
AST increased		17.5	3.6	very common
ALT increased		16.1	3.4	very common
<b>Infections and Infestations</b>				
Lung infection <sup>8</sup>		13.1	6.0*	very common
Urinary tract infection		12.7	2.6	very common
<b>Eye Disorders</b>				
Vision Blurred <sup>13</sup>		11.9	0.4	very common
<b>Skin and Subcutaneous Tissue Disorders</b>				
Rash <sup>12</sup>		11.5	1.4	very common
<b>Vascular Disorders</b>				
Hypotension <sup>15</sup>		16.5	2.4	very common
<b>Cardiac Disorders</b>				
Congestive Heart Failure <sup>9</sup>		3.0	2.2	common
Electrocardiogram QT prolonged		2.0	0.6	common

ALT: Alanine aminotransferase  
 AST: Aspartate aminotransferase  
 \* Grades 3 to 5, inclusive of fatal adverse reactions (including 2 reactions of pneumonia, 2 reactions of dyspnea, and 1 reaction of tumour lysis syndrome)  
<sup>1</sup> Includes preferred terms: cognitive disorder, confusional state, disturbance in attention, memory impairment, amnesia, mental status changes, hallucination, delirium, 'hallucination visual' and mental disorder.  
<sup>2</sup> Includes the preferred terms: neuralgia, neuropathy peripheral, peripheral motor neuropathy, peripheral sensory neuropathy  
<sup>3</sup> Includes the preferred terms: paresthesia, hyperesthesia, hypoesthesia, dysesthesia  
<sup>4</sup> Includes the preferred terms: ataxia, balance disorder, gait disturbances  
<sup>5</sup> Includes the preferred terms: dizziness, vertigo, dizziness postural  
<sup>6</sup> Includes the preferred terms: face edema, fluid retention, generalized edema, localized edema, edema, edema peripheral, peripheral swelling  
<sup>7</sup> Includes the preferred terms: back pain, neck pain, musculoskeletal chest pain, musculoskeletal pain, pain in extremity  
<sup>8</sup> Includes the preferred terms: bronchitis, lower respiratory tract infection, lung infection, pneumonia, respiratory tract infection, upper respiratory tract infection  
<sup>9</sup> Includes the preferred terms: acute right ventricular failure, cardiac failure, cardiac failure congestive, chronic right ventricular failure, ejection fraction decreased, pulmonary edema  
<sup>10</sup> Includes the preferred terms: neutropenia, neutrophil count decreased  
<sup>11</sup> Includes the preferred terms: humerus fracture, foot fracture, ankle fracture, femoral neck fracture, stress fracture, fibula fracture, fracture, rib fracture, spinal fracture, wrist fracture, femur fracture, pathological fracture  
<sup>12</sup> Includes the preferred terms: rash, rash maculopapular, rash pruritic, rash erythematous, rash papular  
<sup>13</sup> Includes the preferred terms: diplopia, vision blurred, visual impairment  
<sup>14</sup> Includes the preferred terms: fatigue, asthenia  
<sup>15</sup> Includes the preferred terms: hypotension, orthostatic hypotension  
<sup>16</sup> Includes the preferred terms: hypersomnia, insomnia, sleep disorder, somnolence  
<sup>17</sup> Includes the preferred terms: anxiety, affect lability, affective disorder, agitation, depressed mood, euphoric mood, mood altered, mood swings, irritability, depression, persistent depressive disorder, psychomotor retardation

#### Description of selected adverse drug reactions

##### Cognitive disorders

A variety of cognitive symptoms were reported across clinical trials (see section 2.4.1 *General (Warnings and Precautions)*). These included events reported as cognitive disorders (6.3%), confusional state (7.3%), disturbance in attention (3.8%), memory impairment (4.2%), amnesia (2.8%), mental status changes (1.2%), hallucination (1.0%), delirium (0.8%), hallucination visual (0.4%) and mental disorder (0.2%). Grade 3 events were reported in 4.4% of patients. In the pediatric population, 3.4% (1/29) pediatric patients experienced disturbance in attention of Grade 1 severity. Patients who had brain metastases at baseline had a higher frequency of these events (29.7%) compared to those without brain metastases (23.1%).

##### Fractures

Fractures were experienced by 5.3% (N=475) of adult patients and 20.7% (N=29) of pediatric patients. In general, there was inadequate assessment for tumour involvement at the site of fracture; however, radiologic abnormalities possibly indicative of tumour involvement were reported in some patients. In both adult and pediatric patients, most fractures were hip or other lower extremity fractures (e.g., femoral or tibial shaft). In 2 pediatric patients, bilateral femoral neck fractures occurred. No patients discontinued Rozlytrek due to fractures.

In adult patients, some fractures occurred in the setting of a fall or other trauma to the affected area. The median time to fracture was 3.42 months (range: 0.26 months to 18.5 months) in adults. Rozlytrek was interrupted due to fractures in 36.0% of adult patients that experienced fractures.

In pediatric patients, all fractures occurred in patients with minimal or no trauma. The median time to fracture was 3.38 months (range: 1.77 months to 7.39 months) in pediatric patients. Rozlytrek was interrupted due to fractures in 33.3% of pediatric patients that experienced fractures.

##### Ataxia

Ataxia (including events of ataxia, balance disorder, and gait disturbances) was reported in 15.7% of patients. The median time to onset for ataxia was 0.36 months (range: 0.03 months to 28.19 months) and the median duration was 0.66 months (range: 0.03 months to 11.99 months). The majority of patients (67.1%) recovered from ataxia. Ataxia related

adverse events were observed more frequently in elderly patients (23.8%) compared to patients below 65 years of age (12.8%).

#### Syncope

Syncope events were reported in 4.6% of patients. In some patients, syncope was reported with concurrent hypotension, dehydration, or QTc prolongation and in other patients no other concurrent related conditions were reported.

#### QTc interval prolongation

Amongst the 504 patients who received entrectinib across clinical trials, 17 (4.0%) patients with at least one post-baseline ECG assessment experienced QTcF interval prolongation of > 60 ms after starting entrectinib, and 12 (2.8%) patients had a QTcF interval of ≥ 500 ms.

#### Peripheral sensory neuropathy

Peripheral sensory neuropathy was reported in 15.7% of patients. The median time to onset was 0.49 months (range 0.03 months to 20.93 months) and the median duration was 0.76 months (range: 0.07 months to 6.01 months). The majority of patients (55.7%) recovered from peripheral neuropathy.

#### Eye Disorders

Eye disorders reported across clinical trials included events of vision blurred (8.5%), diplopia (2.6%), and visual impairment (1.6%). The median time to onset for eye disorders was 1.87 months (range: 0.03 months to 21.59 months). The median duration of eye disorders was 1.02 months (range 0.03 months to 14.49 months). The majority of patients (61.7%) recovered from the eye disorder events.

#### Hyperuricemia

Amongst the 504 patients who received Rozlytrek across clinical trials, 9.1% of patients experienced hyperuricemia as an adverse event. Grade 4 events were reported in 1.4% of patients, including one patient who died of tumour lysis syndrome. In all 46 patients with an adverse event of hyperuricemia, 6.5% required dose reduction, and 10.9% required dose interruption of Rozlytrek.

#### Laboratory Abnormalities

The following table provides treatment-emergent shifts from baseline in laboratory abnormalities occurring in patients treated with Rozlytrek across the 4 clinical trials.

**Table 6: Rozlytrek Treatment-emergent shifts from baseline in key laboratory abnormalities**

Laboratory Abnormality <sup>1</sup>	Test	Rozlytrek NCI-CTCAE Grade N= 504 <sup>2</sup>	
		Change from Baseline All Grades (%)	Change from Baseline to Grade 3 or 4 (%) <sup>3</sup>
<b>Chemistry</b>			
Increased Blood Creatinine		94.8	3.1
Hyperuricemia		50.8	6.8
Increased AST		43.3	3.3
Increased ALT		38.4	3.1
<b>Hematology</b>			
Decreased Neutrophils		27.8	6.3
Decreased Hemoglobin		65.7	9.2

AST: Aspartate Aminotransferase; ALT: Alanine Aminotransferase  
<sup>1</sup> Based on number of patients with available baseline and at least one on-treatment test value  
<sup>2</sup> N=480 for Blood Creatinine; N=478 for AST; N=479 for ALT; N=382 for Hyperuricemia; N=457 for Neutrophils; N=487 for Hemoglobin  
<sup>3</sup> Patients with change from baseline values of Grade of 0–2 to a post-baseline value of Grade 3 or Grade 4 at any time

#### 2.6.2 Postmarketing Experience

Not applicable

#### 2.7 OVERDOSE

There is no experience with overdose in clinical trials with Rozlytrek. Patients who experience overdose should be closely supervised and supportive care instituted. There are no known antidotes for Rozlytrek.

#### 2.8 INTERACTIONS WITH OTHER MEDICINAL PRODUCTS AND OTHER FORMS OF INTERACTION

##### Effects of entrectinib on other drugs

###### CYP substrates

Based on the *in vitro* studies in human liver microsomes, entrectinib exhibits inhibitory potential toward CYP3A.

*In vitro* studies indicate that entrectinib and its major active metabolite, M5, do not inhibit CYP1A2, CYP2B6, CYP2C8, CYP2C9, CYP2C19 and CYP2D6 at clinically relevant concentrations.

*In vitro* results indicate entrectinib has weak induction potential toward CYP3A and CYP2C8/9.

In a clinical study, co-administration of multiple doses of entrectinib and midazolam, a sensitive CYP3A substrate, increased the systemic exposure of midazolam by approximately 50% indicating a weak inhibitory effect of entrectinib on the metabolism of midazolam (Geometric mean ratio (GMR) with/without entrectinib for AUC<sub>inf</sub> (90% CI) was 150% (129%, 173%)).

Therefore, no dose adjustment is required when Rozlytrek is co-administered with CYP3A substrates.

###### P-gp substrates

*In vitro* data suggest that entrectinib has inhibitory potential towards P-gp.

In a clinical study, co-administration of a single oral dose of entrectinib with a sensitive P-gp substrate, digoxin, increased the digoxin C<sub>max</sub> by approximately 28% and overall exposure by approximately 18% (GMR with/without entrectinib for C<sub>max</sub> (90% CI) was 128% (98.2%, 167%) and AUC<sub>inf</sub> (90% CI) was 118% (106%, 132%)). The renal clearance of digoxin was similar between treatments of digoxin alone and digoxin co-administered with entrectinib, indicating minimal effect of entrectinib on renal clearance of digoxin.

These results indicate that entrectinib is a weak P-gp inhibitor and that no clinically significant interaction exists between digoxin, as a P-gp substrate, and entrectinib. Therefore, no dose adjustment is required when Rozlytrek is co-administered with P-gp substrates.

###### BCRP substrates

As with P-gp, a mild inhibition of BCRP was observed in *in vitro* studies. Given that no clinically significant interaction was observed with the P-gp substrate digoxin, an interaction with BCRP is not predicted. No dose adjustment is required when Rozlytrek is co-administered with BCRP substrates.

###### Other transporter substrates

*In vitro* data indicate that entrectinib has weak inhibitory potential toward organic anion-transporting polypeptide (OATP) 1B1 and multidrug and toxin extrusion protein 1 (MATE1).

###### Oral Contraceptive

Physiologically-based pharmacokinetic simulation of the effects of co-administration of multiple oral doses of entrectinib with ethinyl estradiol, an oral contraceptive, predicted no drug-drug interaction. GMR with/without entrectinib for AUC<sub>inf</sub> (90% CI) of 112% (111%, 113%) and C<sub>max</sub> (90% CI) was 112% (111%, 113%).

Therefore Rozlytrek can be co-administered with an oral contraceptive.

##### Effects of other drugs on entrectinib

Based on *in vitro* data, CYP3A4 is the predominant enzyme mediating the metabolism of entrectinib and formation of its major active metabolite M5.

###### CYP3A inducers

Co-administration of multiple oral doses of rifampin, a strong CYP3A inducer, with a single oral dose of entrectinib reduced the systemic exposure of entrectinib by 77%. GMR with/without rifampin for AUC<sub>inf</sub> (90% CI) was 23.3% (18.4%, 29.5%) and C<sub>max</sub> (90% CI) was 44.4% (35.3%, 55.9%).

Co-administration of Rozlytrek with CYP3A inducers should be avoided (see section 2.2 *Dosage and Administration*).

###### CYP3A inhibitors

Co-administration of a single oral dose of entrectinib with multiple oral doses of itraconazole, a strong CYP3A4 inhibitor, increased the systemic exposure of entrectinib by 500%. GMR with/without itraconazole for AUC<sub>inf</sub> (90% CI) was 604% (454%, 804%) and C<sub>max</sub> (90% CI) was 173% (137%, 218%).

Co-administration of strong and moderate CYP3A inhibitors (including, but not limited to, anti-fungal agents, anti-retroviral agents) with Rozlytrek should be avoided or limited to 14 days. If concurrent use is unavoidable, dose adjustment of Rozlytrek is required as described in section 2.2 *Dosage and Administration*.

###### Medicinal products that increase gastric pH

The aqueous solubility of entrectinib *in vitro* is pH dependent. In a clinical study, administration of entrectinib with lansoprazole (a proton pump inhibitor (PPI)), resulted in a 25% decrease in entrectinib systemic exposure which is not clinically relevant. GMR with/without lansoprazole for AUC<sub>inf</sub> (90%CI) was 74.5% (64.7%, 85.9%) and C<sub>max</sub> (90% CI) was 76.5% (67.6%, 86.6%).

Therefore, no dose adjustments are required when Rozlytrek is co-administered with PPIs or other drugs that raise gastric pH (e.g., H2 receptor antagonists or antacids).

###### Effect of transporters on Entrectinib disposition

Based on the *in vivo* brain-to-plasma concentration ratio (≥0.6) at steady-state in rats and dogs as well as lack of sensitivity to a P-gp inhibitor *in vitro* in a P-gp expressing cell assay, entrectinib is considered a poor substrate of P-gp. M5 is a substrate of P-gp.

Entrectinib is not a substrate of BCRP but M5 is a substrate of BCRP. Entrectinib and M5 are not substrates of OATP1B1 or OATP1B3.

### 3. PHARMACOLOGICAL PROPERTIES AND EFFECTS

#### 3.1 PHARMACODYNAMIC PROPERTIES

##### 3.1.1 Mechanism of Action

Entrectinib is a potent inhibitor of receptor tyrosine kinases TRKA, TRKB and TRKC (encoded by the neurotrophic tyrosine receptor kinase [NTRK] genes *NTRK1*, *NTRK2* and *NTRK3*, respectively), proto-oncogene tyrosine-protein kinase ROS (ROS1; encoded by the gene *ROS1*), and anaplastic lymphoma kinase (ALK; encoded by the gene *ALK*). The major active metabolite of entrectinib, M5, showed similar *in vitro* potency and activity.

Fusion proteins that include TRK, ROS1 or ALK kinase domains drive tumorigenic potential through hyperactivation of downstream signaling pathways leading to unconstrained cell proliferation. Entrectinib potentially inhibits the TRK kinases, ROS1 and ALK, leading to inhibition of downstream signaling pathways, cell proliferation and induction of tumor cell apoptosis. Entrectinib demonstrates potent inhibition of cancer cell lines harboring *NTRK*, *ROS1* and *ALK* fusion genes, irrespective of tumor type. Entrectinib has anti-tumor potency in *NTRK* and *ROS1* fusion-driven tumor models, driving tumor regressions across multiple tumor types, including sarcomas, head and neck carcinoma, non-small cell lung carcinoma (NSCLC), colorectal cancer (CRC), acute myeloid leukemia (AML), and gliomas.

Entrectinib is a CNS penetrant molecule that showed brain-to-plasma concentration ratios of 0.4-2.2 in multiple animal species (mice, rats and dogs). It has demonstrated potent anti-tumor activity in three TRKA-driven intracranial tumor models and one ALK-driven intracranial tumor model. These data are consistent with entrectinib dosing resulting in sufficient brain exposure achieving target pharmacological activities at steady-state and at clinically relevant systemic exposures.

##### 3.1.2 Clinical / Efficacy Studies

###### NTRK fusion-positive solid tumors

###### Efficacy in Adult patients

The efficacy of Rozlytrek in the treatment of *NTRK* fusion-positive solid tumors in adult patients was evaluated by combining the results from 3 single-arm, open label clinical trials (ALKA, STARTRK-1 and STARTRK-2) through a pre-specified integrated analysis.

Study ALKA was a Phase I single arm, open-label study in patients ≥ 18 years of age with solid tumors with *NTRK1/2/3*, *ROS1*, or *ALK* molecular alterations to determine the maximum tolerated dose. Study STARTRK-1 was a Phase I multi-center single arm, open label study in patients ≥ 18 years of age with solid tumors with *NTRK1/2/3*, *ROS1*, or *ALK* molecular alterations. The study included a dose escalation segment and a dose expansion segment. In the dose expansion segment, patients received 600 mg daily in repeated 4-week cycles and the primary objective was to evaluate the recommended Phase 2 dose. Study STARTRK-2 was a multicenter, international Phase II single-arm basket study in patients with solid tumors with *NTRK1/2/3*, *ROS1*, or *ALK* gene rearrangements. Patients received 600 mg Rozlytrek once daily in 4-week cycles.

The primary efficacy outcome measures in the integrated analyses were objective response rate (ORR) and duration of response (DOR) as evaluated by Blinded Independent Central Review (BICR) according to Response Evaluation Criteria in Solid Tumors (RECIST) v1.1. The secondary efficacy outcome measures included clinical benefit rate (CBR), progression-free survival (PFS), time to central nervous system (CNS) progression, overall survival (OS), and in patients presenting with CNS metastases at baseline - intracranial (IC) ORR, IC-DOR, and IC-PFS (also evaluated by BICR using RECIST v1.1).

The efficacy evaluable analyses set comprised a total of 74 adult patients with confirmed *NTRK* fusion-positive solid tumors treated with Rozlytrek, not previously treated with a TRK inhibitor, presenting with measurable disease at baseline as assessed by investigator, and with ≥ 6 months of follow up. *NTRK* fusion-positive status was determined by a validated nucleic acid-based test performed at a Clinical Laboratory Improvement Amendments (CLIA)-certified or equivalently accredited laboratory, prior to enrollment in the study.

The baseline demographic and disease characteristics of the efficacy evaluable population were: 47.3% males, median age of 57 years (range: 21 to 83 years), 70.0% white Caucasian, 17.6% Asian, 5.5% Hispanic or Latino and 59.7% never smokers. The ECOG (Eastern Cooperative Oncology Group) performance status at baseline was 0 (40.5%), 1 (45.9%), or 2 (13.5%). Most patients (97.3%) had metastatic disease [most common sites being lung (60.8%), lymph nodes (52.7%) and brain (25.7%)], 2.7% patients had locally advanced disease, and 27% patients had no prior systemic therapies. The overall median duration of follow-up was 14.2 months.

Efficacy results from patients with *NTRK*-fusion positive solid tumors are summarized in Table 7.

**Table 7: Overall efficacy by BICR in Adults with NTRK-fusion positive Solid Tumors**

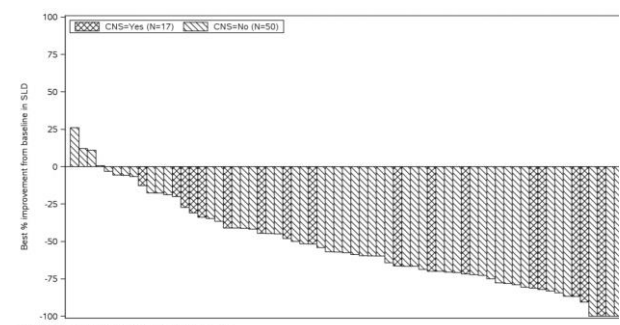
Efficacy Endpoints	Rozlytrek N=74
<b>Primary endpoints (BICR-assessed, RECIST 1.1)</b>	
ORR	
Number of CR+PR	47/74
ORR% (95% CI)	63.5% (51.5, 74.4)
Complete Response, n (%)	5 (6.8%)
Partial Response, n (%)	42 (56.8%)
Stable Disease, n (%)	9 (12.2%)
Progressive Disease, n (%)	6 (8.1%)
DOR *	
Number (%) of patients with events	21/47 (44.7%)
Median, months (95% CI)	12.9 (9.3, NE)
6-month durable response % (95% CI)	0.71 (0.58, 0.85)
9-month durable response % (95% CI)	0.65 (0.51, 0.8)
12-month durable response % (95% CI)	0.55 (0.39, 0.72)
<b>Secondary endpoints (BICR-assessed, RECIST 1.1)</b>	
CBR	
Number of CR+PR+SD 6 months / Number of patients	50/74
CBR% (95% CI)	67.6% (55.7, 78.0)
PFS *	
Number (%) of patients with events/Number of patients	41/74 (55.4%)
Median, months (95% CI)	11.2 (8.0, 15.7)
Time to CNS Progression	
Number (%) of patients with events	27/74 (36.5%)
Median, months (95% CI)	16.8 (14.3, NE)
Overall Survival	
Number (%) of patients with events	24/74 (32.4%)
Median, months (95% CI)	23.9 (16.0, NE)

CR: complete response; PR: partial response; NE: not estimable.  
Confidence Intervals (CI) calculated using the Clopper-Pearson method.  
\*Median and percentiles based on Kaplan-Meier estimates

As shown in Figure 1, most adult patients with *NTRK*-fusion positive solid tumors experienced tumor shrinkage, as assessed by BICR according to RECIST 1.1.

**Figure 1: Best percentage change in the sum of target lesions from baseline (BICR Assessment) in Adults with NTRK-fusion positive Solid Tumors, shaded by CNS metastases at baseline**

SLD: Sum of Longest Diameter



SLD: Sum of Longest Diameter

Of the 74 adult patients with *NTRK*-fusion positive solid tumors in the efficacy evaluable analysis set, 19 patients were identified by the Investigator to have CNS metastases at baseline. Efficacy results by BICR according to RECIST v 1.1 in this subgroup of patients with CNS metastases at baseline are summarized in Table 8.

**Table 8: Efficacy in Adults with NTRK-fusion positive Solid Tumors with CNS Metastases at Baseline**

Secondary Endpoint (BICR-assessed, RECIST 1.1)	CNS Metastases at Baseline (by Investigator)-	
	Yes N=19	No N=55
ORR		
Number of CR+PR	11	36
ORR% (95% CI)	57.9% (33.50, 79.75)	65.5% (51.42, 77.76)
Complete Response, n (%)	0	5 (9.1%)
Partial Response, n (%)	11 (57.9%)	31 (56.4%)
Stable Disease, n (%)	4 (21.1%)	5 (9.1%)
Progressive Disease, n (%)	1 (5.3%)	5 (9.1%)
DOR		
Number of patients with events	5 (45.5%)	16 (44.4%)
Median, months (95% CI)	6.0 (4.2, NE)	12.9 (9.3, NE)

PFS		
Number of patients with events	12 (63.2%)	29 (52.7%)
Median, months (95% CI)	6.7 (4.5, NE)	13.7 (10.1, 16.0)
CR: complete response; PR: partial response; NE: not estimable. Confidence Intervals (CI) calculated using the Clopper-Pearson method.		

Objective response rate and duration of response by tumor type in all efficacy evaluable adult patients with *NTRK*-fusion positive solid tumors is presented in Table 9.

**Table 9: Efficacy by Tumor Type, in adults with *NTRK*-fusion positive Solid Tumors**

Tumor Type	Patients (N=74)	ORR		DOR
		n (%)	95% CI	Range (months)
All	74	47 (63.5)	(51.5, 74.4)	1.4* to 26.0*
Sarcoma	16	9 (56.3)	(29.9, 80.3)	2.8, 15.1
Non-small cell lung cancer	13	9 (69.2)	(38.6, 90.9)	1.4*, 25.9*
Salivary (MASC)	13	12 (92.3)	(64.0, 99.8)	2.8, 22.1*
Breast cancer (secretory)	4	4 (100)	(39.8, 100)	5.5, 20.3*
Breast cancer (non-secretory)	2	NE, PR	NA	4.2
Thyroid cancer	7	3 (42.9)	(9.9, 81.6)	5.6, 10.9*
Colorectal cancer	7	2 (28.6)	(3.7, 71)	7.9*, 15.2
Neuroendocrine cancers	4	2 (50.0)	(6.8, 93.2)	1.9*, 9.2*
Pancreatic cancer	3	2 (66.7)	(9.4, 99.2)	7.1, 12.9
Ovarian cancer	1	Non	NA	NA
		CR/PD		
Endometrial carcinoma	1	PR	NA	26.0*
Cholangiocarcinoma	1	PR	NA	9.3
Gastrointestinal cancer (other)	1	PR	NA	5.6*
Neuroblastoma	1	NE	NA	NA

\* Censored  
ORR: Objective Response Rate; DOR: Duration of Response; MASC: mammary analogue secretory carcinoma; NA: not applicable due to small number or lack of response; CR: complete response; PR: partial response; PD: progressive disease; NE: Not estimable.

#### Intracranial Response

Of the 74 adult patients with *NTRK*-fusion positive solid tumors in the efficacy evaluable analysis set, 16 patients had CNS metastases at baseline as assessed by BICR, including 8 patients with measurable CNS lesions. Intracranial ORR, DOR, and PFS assessed by BICR according to RECIST version 1.1 in this subgroup of patients with measurable CNS lesions at baseline are summarized in Table 10.

**Table 10: Intracranial Efficacy in Adults with *NTRK*-fusion positive Solid Tumors with CNS Metastases at Baseline by BICR**

Secondary Endpoint (BICR-assessed, RECIST 1.1)	CNS Metastases at Baseline (by BICR)	
	Measurable disease N=8	All patients N=16
IC-ORR		
Responders	5	8
IC-ORR% (95% CI)	62.5% (24.5, 91.5)	50% (24.7, 75.4)
Complete Response n (%)	1 (12.5%)	4 (25%)
Partial Response n (%)	4 (50%)	4 (25%)
IC-DOR		
Number of patients with events (%)	2 (40%)	4 (50%)
Median, months (95% CI)	NE (5.0, NE)	8.0 (6.7, NE)
IC-PFS		
Number of patients with events (%)	4 (50%)	10 (62.5%)
Median, months (95% CI)	10.1 (2.8, NE)	8.9 (5.9, 14.3)

NE: not estimable.  
IC-ORR derived using RECIST 1.1 criteria applied only to CNS lesions.  
Confidence Intervals (CI) calculated using the Clopper-Pearson method.

#### Primary CNS tumors

Across the three trials, seven adult patients with CNS primary tumors were treated with Rozlytrek with a minimum of 6 months of follow-up. IC-ORR, DOR and PFS were assessed by BICR according to Response Assessment in Neuro-Oncology Criteria (RANO). One patient had an objective response with a DOR of 2.79 months and PFS of 6.34 months.

#### Patient Reported Outcomes

Study STARTRK-2 evaluated patient-reported outcomes of the treatment impact on symptoms, functioning and health-related quality of life (HRQoL) based on the EORTC Core Quality of Life Questionnaire (QLQ-C30), the EORTC Quality of Life Questionnaire lung cancer module (QLQ-LC13), and the EORTC Quality of Life Questionnaire colorectal cancer module (QLQ-CR29). Scale scores on these questionnaires range from 0 to 100, with higher scores (i.e. closer to 100) reflecting better HRQoL and functioning but worse symptomatology.

At baseline, patients with *NTRK*-fusion positive solid tumors reported moderate-to-high HRQoL and functioning scores on the EORTC QLQ-C30 (global health status/HRQoL [mean score=68.6], physical functioning [mean score=74.8], role functioning [mean score=66.9], and cognitive functioning [mean score=83.9]). While receiving Rozlytrek, patients tended to maintain baseline HRQoL (mean changes from baseline ranging from -4.4 to 5.4 on the global health status up to Cycle 17). For the physical and role functioning scales, patients continued to report moderate-to-high scores at most study visits, with improvements ( $\geq 10$ -point change from baseline) observed as early as Cycle 14 (mean change from baseline of 10.0) for physical functioning and Cycle 10 (mean change from baseline of 16.0) for role functioning. For cognitive functioning scale, patients maintained their overall high baseline scores, with a trend towards some worsening over time (worst mean change from baseline of -9.3 at Cycle 17).

According to the EORTC QLQ-LC13, *NTRK*-fusion positive NSCLC patients reported low-to-moderate symptom burden at baseline (chest pain [mean score=5.6], coughing [mean score=38.9], and dyspnea [mean score=26.9]) and at most study visits throughout the study.

According to the EORTC QLQ-CR29, *NTRK*-fusion positive mCRC patients reported low-to-moderate symptom burden at baseline (abdominal pain [mean score=27.8], bloating [mean score=33.3], and stool frequency [mean score=13.9]). Scores were variable, followed no trend but overall remained low at most study visits throughout the study.

#### Efficacy in Pediatric patients

The efficacy of Rozlytrek in pediatric patients with *NTRK* fusion-positive solid tumors was evaluated in study STARTRK-NG (ST-NG). This study is a multi-center Phase I/II, open-label dose-escalation and expansion study in pediatric patients with relapsed or refractory solid tumors, including primary CNS tumors, with or without *NTRK*, *ROS1* or *ALK* molecular alterations. Patients received 250mg/m<sup>2</sup> to 750mg/m<sup>2</sup> once daily of Rozlytrek in 4-week cycles. The range of survival follow up was 6.9 months to 18.0 months.

Table 11 summarizes the efficacy of Rozlytrek in 7 pediatric patients (less than 18 years of age) with *NTRK* fusion-positive solid tumors as assessed by the BICR according to RECIST version 1.1 for extra-cranial tumors and according to RANO for CNS primary tumors. Efficacy data in pediatric patients with *NTRK* fusion-positive solid tumors is further supported by extrapolation from results in the respective adult populations.

**Table 11: Efficacy in Pediatric patients with *NTRK* fusion-positive Solid Tumors assessed by BICR**

Tumor Type	Best Overall Response	Duration of Response (months)
Infantile fibrosarcoma	PR	13.6*
Infantile fibrosarcoma	CR <sup>b</sup>	6.5*
Epithelioid glioblastoma <sup>a</sup>	CR <sup>b</sup>	9.7*
High grade glioma <sup>a</sup>	PR <sup>b</sup>	14.3*
Metastatic melanoma	PR <sup>b</sup>	12.9*
Anaplastic ganglioglioma <sup>a</sup>	CR <sup>b</sup>	5.5
Ganglioneuroblastoma of the CNS <sup>a</sup>	PR <sup>b</sup>	3.7*

<sup>a</sup> Primary CNS tumors (assessment was by RANO criteria)  
<sup>b</sup> Patient was still receiving entrectinib treatment at the time of the clinical cutoff date (1 May 2019)  
\*censored observation

#### ROS1-positive NSCLC

The efficacy of Rozlytrek in the treatment of *ROS1* positive locally advanced or metastatic NSCLC was evaluated by combining the results from 3 single-arm, open label clinical trials (ALKA, STARTRK-1 and STARTRK-2) described above, through a pre-specified integrated analysis.

The primary efficacy outcome measures in the integrated analyses were ORR and DOR, as evaluated by BICR according to RECIST v1.1. The secondary efficacy outcome measures included CBR, PFS, time to CNS progression, OS, and in patients presenting with CNS metastases at baseline - IC-ORR, IC-DOR, and IC-PFS (also evaluated by BICR using RECIST v1.1).

The efficacy evaluable analyses set comprised a total of 94 patients with histologically confirmed *ROS1*-positive NSCLC treated with Rozlytrek, not previously treated with a *ROS1*-inhibitor, presenting with measurable disease at baseline as assessed by the investigator, and with  $\geq 12$  months of follow up. *ROS1*-positive status was determined by a validated nucleic acid-based test performed at a CLIA-certified or equivalently accredited laboratory, prior to enrollment in the study.

The baseline demographic and disease characteristics of the efficacy evaluable population were: 36.2% males, median age of 53 years (range: 27 to 86 years), 79.8% patients <65 years of age, 48.9% white Caucasian, 43.6% Asian, 5.3% Black, 2.4% Hispanic or Latino and 59.6% never smokers. The ECOG (Eastern Cooperative Oncology Group) performance status at baseline was 0 (37.2%), 1 (51.1%), or 2 (11.7%). Most patients (98.9%) had metastatic disease with 42.6% having brain metastases [other common sites were lung (57.4%) and lymph nodes (75.5%)], 1.1% patients had locally advanced disease, and 33% patients had no prior systemic therapies. The overall median duration of follow-up was 20.9 months.

Efficacy results from patients with *ROS1*-positive NSCLC are summarized in Table 12.

**Table 12: Overall Efficacy by BICR in patients with *ROS1*-positive NSCLC**

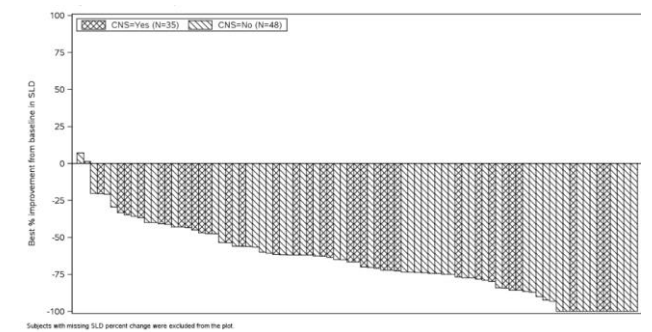
Efficacy Endpoint	Rozlytrek N= 94
<b>Primary endpoints (BICR-assessed, RECIST 1.1)</b>	
ORR	
Number of CR+PR	69/94
ORR% (95% CI)	73.4 (63.3, 82.0)
Complete Response, n (%)	11 (11.7%)
Partial Response, n (%)	58 (61.7%)
Stable Disease, n (%)	6 (6.4%)
Progressive Disease, n (%)	8 (8.5%)
DOR *	
Number (%) of patients with events	36/69 (52.2%)
Median, months (95% CI)	16.5 (14.6, 28.6)**
6-month durable response % (95% CI)	0.82 (0.72, 0.91)
9-month durable response % (95% CI)	0.79 (0.69, 0.89)
12-month durable response % (95% CI)	0.66 (0.54, 0.78)
<b>Secondary endpoints (BICR-assessed, RECIST 1.1)</b>	
CBR	
Number of CR+PR+SD 6 months	70/94
CBR% (95% CI)	74.5% (64.4, 82.9)
PFS*	
Number (%) of patients with events	54/94 (57.4%)
Median, months (95% CI)	16.8 (12.0, 21.4)
Time to CNS Progression	
Number (%) of patients with events	(40/94 (42.6%))
Median, months (95% CI)	24.8 (16.1, NE)
Overall Survival	
Number (%) of patients with events	25/94 (26.6%)
Median, months (95% CI)	(28.3, NE)

CR: complete response; PR: partial response; NE: not estimable.  
Confidence Intervals (CI) calculated using the Clopper-Pearson method.  
\*Median and percentiles based on Kaplan-Meier estimates

\*\*not a robust estimate

Most *ROS1*-positive NSCLC patients treated with Rozlytrek experienced tumor shrinkage of their defined target lesions, as assessed by BICR according to RECIST 1.1. See Figure 2.

**Figure 2: Best percentage change in the sum of target lesions from baseline (BICR Assessment) in patients with *ROS1*-positive NSCLC, shaded by CNS metastases at baseline**



SLD: Sum of Longest Diameter

Of the 94 patients with *ROS1*-positive NSCLC in the efficacy evaluable analysis set, 40 patients were identified by the Investigator to have CNS metastases at baseline. Efficacy results by BICR according to RECIST v 1.1 in this subgroup of patients with CNS metastases at baseline are summarized in Table 13.

**Table 13: Efficacy in *ROS1*-positive NSCLC Patients with CNS metastases at Baseline**

Secondary Endpoints (BICR-assessed, RECIST 1.1)	CNS Metastases at Baseline (by Investigator)	
	Yes N=40	No N=54
ORR		
Number of CR+PR	27/40	42/54
ORR% (95% CI)	67.5% (50.9, 81.4)	77.8% (64.4, 88.0)
Complete Response, n (%)	4 (10.0)	7 (13.0)
Partial Response, n (%)	23 (57.5)	35 (64.8)
Stable Disease, n (%)	2 (5.0)	4 (7.4)
Progressive Disease, n (%)	6 (15.0)	2 (3.7)
DOR		
Number of patients with events	14/27 (51.9%)	22/42 (52.4%)
Median, months (95% CI)	16.5 (9.6, NE)	24.6 (13.9, 34.8)
PFS		
Number of patients with events	25/40 (62.5%)	29/54 (53.7%)
Median, months (95% CI)	11.9 (6.3, 21.1)	21.1 (14.8, 30.8)

CR: complete response; PR: partial response; NE: not estimable.  
Confidence Intervals (CI) calculated using the Clopper-Pearson method.

#### Intracranial Response

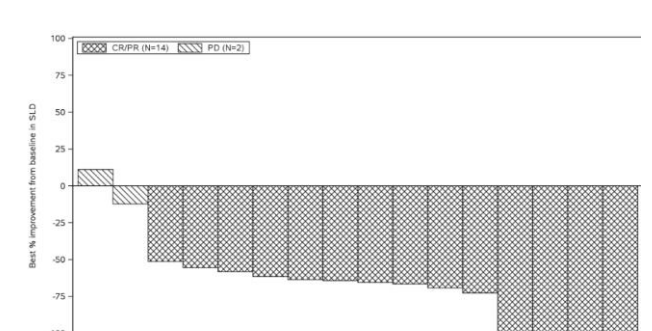
Of the 94 patients with *ROS1*-positive NSCLC in the efficacy evaluable analysis set, 34 patients had CNS metastases at baseline as assessed by BICR, including 18 patients with measurable CNS lesions. Intracranial ORR, DOR, and PFS assessed by BICR according to RECIST version 1.1 in this subgroup of patients with measurable CNS lesions at baseline are summarized in Table 14 and Figure 3 below.

**Table 14: Intracranial Efficacy in *ROS1*-positive NSCLC patients with CNS metastases at baseline by BICR**

Secondary Endpoint (BICR-assessed, RECIST 1.1)	CNS Metastases at Baseline (by BICR)	
	Measurable disease N=18	All patients N=34
IC-ORR		
Responders	14	17
IC-ORR% (95% CI)	77.8% (52.4, 93.6)	50% (32.4, 67.6)
Complete Response n (%)	2 (11.1%)	5 (14.7%)
Partial Response n (%)	12 (66.7%)	12 (35.3%)
IC-DOR		
Number of patients with events (%)	10 (71.4%)	11 (64.7%)
Median, months (95% CI)	12.9 (5.3, 16.5)	12.9 (5.6, 22.1)
IC-PFS		
Number of patients with events (%)	13 (72.2%)	25 (73.5%)
Median, months (95% CI)	7.7 (4.6, 17.4)	7.7 (4.6, 15.7)

NE: not estimable.  
IC-ORR derived using RECIST 1.1 criteria applied only to CNS lesions.  
Confidence Intervals (CI) calculated using the Clopper-Pearson method.

**Figure 3: Intracranial Activity- Best Percent Change from Baseline in Tumor Sum in *ROS1*-positive NSCLC Patients with Measurable CNS metastases at Baseline by BICR**



SLD: Sum of Longest Diameter  
Patients without measurable CNS disease at baseline or without post-baseline measurements were excluded from the plot

#### Previous treatment with Crizotinib

Efficacy of Rozlytrek in *ROS1* positive NSCLC patients who have progressed on prior crizotinib is not well established. In an exploratory analysis conducted in 27 patients with *ROS1* positive NSCLC previously treated with crizotinib, ORR was 10.5% and 12.5% in patients who had CNS-only progression and systemic progression while on crizotinib, respectively.

#### Patient Reported Outcomes

Study STARTRK-2 evaluated patient-reported outcomes of the treatment impact on symptoms, functioning and health-related quality of life (HRQoL) based on the EORTC Core Quality of Life Questionnaire (QLQ-C30) and the EORTC Quality of Life Questionnaire lung cancer module (QLQ-LC13). Scale scores on these questionnaire range from 0 to 100, with higher scores (i.e. closer to 100) reflecting better HRQoL and functioning but worse symptomatology.

At baseline, patients with ROS1 positive NSCLC reported moderate-to-high HRQoL and functioning scores on the EORTC QLQ-C30 (global health status/HRQoL [mean score=54.9], physical functioning [mean score=68.1], role functioning [mean score=60.7] and cognitive functioning [mean score=81.8]). While receiving Rozlytrek, patients tended to maintain or improve baseline HRQoL (mean changes from baseline ranging from 0.6 to 12.5 on the global health status/ HRQoL up to Cycle 22), including improvements ( $\geq 10$ -point change from baseline) observed as early as Cycle 4 (mean change from baseline of 10.3). For functioning, patients continued to report moderate-to-high physical functioning and role functioning scores at most study visits with a trend towards improvement, including improvements ( $\geq 10$ -point change from baseline) observed at Cycle 9 (mean change from baseline of 10.4) for physical functioning. The exception was the cognitive functioning scale, for which scores were maintained at their high baseline value, with a trend towards some worsening at specific timepoints (worst mean change of -11.5 at Cycle 21)

According to the EORTC QLQ-LC13, patients reported moderate symptom burden at baseline (chest pain [mean score=18.2] and dyspnea [mean score=35.9]) with improvements on dyspnea observed as early as Cycle 2 (mean change from baseline of -12.2) and maintained for numerous subsequent timepoints. On average, patients reported severe cough at baseline ([mean score=38.5]), with improvements observed as early as Cycle 2 (mean change from baseline of -12.3) and maintained for much of the treatment period. ).

In addition, most patients, indicated that the symptoms commonly associated with Rozlytrek treatment (i.e. lack of appetite, nausea, diarrhea and vomiting) were of low severity, if present.

### 3.1.3 Immunogenicity

Not applicable.

## 3.2 PHARMACOKINETIC PROPERTIES

The pharmacokinetic parameters for entrectinib and its major active metabolite (M5), have been characterized in patients with NTRK-positive solid tumors and ROS1-positive NSCLC, and healthy subjects.

Following administration of a single 600 mg dose of entrectinib, the estimated entrectinib mean ( $\pm$  SD)  $C_{max}$  was 1990 ( $\pm$  1050) nM and  $AUC_{0-24}$  33900 ( $\pm$  15800) nM<sup>h</sup> and for M5  $C_{max}$  was 765 ( $\pm$  598) nM and  $AUC_{0-24}$  13300 ( $\pm$  10200) nM<sup>h</sup>. At steady-state the estimated entrectinib mean  $C_{max}$  was 3490 ( $\pm$  1600) nM and  $AUC_{0-24}$  62800 ( $\pm$  29100) nM<sup>h</sup> and for M5  $C_{max}$  was 1340 ( $\pm$  934) nM and  $AUC_{0-24}$  25500 ( $\pm$  29100) nM<sup>h</sup>.

The population PK model estimated mean accumulation at steady-state following 600 mg once daily administration of entrectinib was 1.89 ( $\pm$  0.381) and 2.01 ( $\pm$  0.437) for M5.

### 3.2.1 Absorption

Following a single 600 mg oral administration of Rozlytrek to patients with NTRK-fusion positive and ROS1 positive NSCLC under fed conditions, entrectinib was rapidly absorbed reaching time-to-maximum plasma concentration ( $T_{max}$ ) after approximately 4 - 6 hours. Based on population pharmacokinetic analysis, steady-state was achieved within 5 days for entrectinib with 600 mg once daily dosing.

The estimated absolute bioavailability of entrectinib based on physiologically based pharmacokinetic (PBPK) modeling was 55%.

No clinically significant effect of food on entrectinib bioavailability was observed. Following a single 600 mg oral administration of Rozlytrek to healthy subjects under fasting conditions and following a high fat, high calorie meal, the GMR under fed/fasted condition for  $AUC_{inf}$  (90%CI) was 115% (107, 124) and for  $C_{max}$  (90%CI) was 106% (98.9, 115). Entrectinib can be administered with or without food (see section 2.2 *Dosage and Administration*).

### 3.2.2 Distribution

Entrectinib and its major active metabolite M5 are highly bound to human plasma proteins independent of drug concentrations. In human plasma, entrectinib and M5 had similar protein binding with >99% bound at a clinically relevant concentration.

After a single oral dose of [<sup>14</sup>C]-labeled entrectinib, the geometric mean volume of distribution ( $V_z/F$ ) was 860 L, suggesting extensive distribution into tissues. Population pharmacokinetic analysis estimated volume of distribution of 551 L and 81.1 L for entrectinib and M5, respectively.

### 3.2.3 Metabolism

Entrectinib is metabolized predominantly by CYP3A4 (~76%). Minor contributions from several other CYPs and UGT1A4 were estimated at <25% in total. The active metabolite M5 (formed by CYP3A4) and the direct N-glucuronide conjugate, M11 (formed by UGT1A4), are the two major circulating metabolites identified.

### 3.2.4 Elimination

Following administration of a single dose of [<sup>14</sup>C]-labeled entrectinib administered orally to healthy subjects, the majority of radioactivity was excreted in feces (82.9%) with minimal excretion in urine (3.06%). In feces, 35.7% and 22.1% of the dose was excreted as unchanged entrectinib and M5, respectively, indicating hepatic clearance is the major route of elimination.

Entrectinib and M5 account for approximately 73% of radioactivity in systemic circulation at  $C_{max}$ , and approximately half of total radioactivity  $AUC_{INF}$ .

Population PK analysis estimated a CL/F of 19.6 L/h and 52.4 L/h for entrectinib and M5, respectively. The elimination half-lives of entrectinib and M5 were estimated to be 20 and 40 hours respectively.

### 3.2.5 Pharmacokinetics in Special Populations

#### Pediatric Population

Data obtained from population pharmacokinetic analyses show that in pediatric patients 12 years and older, a dose of 300 mg Rozlytrek once daily for BSA range 0.81 m<sup>2</sup> to 1.10 m<sup>2</sup>, a dose of 400 mg Rozlytrek once daily for BSA range 1.11 m<sup>2</sup> to 1.50 m<sup>2</sup>, and a dose of 600 mg Rozlytrek once daily for BSA range  $\geq 1.51$  m<sup>2</sup> resulted in a similar systemic exposure attained in adults treated with 600 mg of Rozlytrek once daily.

#### Geriatric Population

No differences in entrectinib exposure were noted in patients older than 65 years and younger adults based on pharmacokinetic analysis.

#### Renal impairment

Negligible amounts of entrectinib and the active metabolite M5 are excreted unchanged in urine (~3 % of the dose) indicating renal clearance plays a minor role in the elimination of entrectinib. Population pharmacokinetic data obtained in patients with mild and moderate impairment show that pharmacokinetics of entrectinib are not significantly affected in renal impairment. No formal pharmacokinetic study has been conducted and no population pharmacokinetic data was collected in patients with severe renal impairment.

#### Hepatic impairment

As elimination of entrectinib is predominantly through metabolism in the liver, hepatic impairment may increase the plasma concentration of entrectinib and/or its major active metabolite M5. Limited clinical data is available in patients with hepatic impairment and a dedicated pharmacokinetic study in patients with hepatic impairment has not been conducted. Based on population pharmacokinetic analysis, entrectinib and M5 exposures were similar in patients with mild, moderate or severe hepatic impairment and normal hepatic function.

#### Ethnicity

Following a single oral dose of Rozlytrek in Japanese and Caucasian healthy volunteers, no clinically relevant differences in the exposure of Rozlytrek were observed. Based on population pharmacokinetics analysis, there was no relationship between systemic exposure of entrectinib and race/ethnicity (Asian, Japanese, white and other ethnicities). No dose adjustment is required for patients of different race/ethnicities. See section 2.2.1 *Special Dosage Instructions*.

## 3.3 NONCLINICAL SAFETY

### 3.3.1 Carcinogenicity

No carcinogenicity studies have been performed to establish the carcinogenic potential of entrectinib.

### 3.3.2 Genotoxicity

Entrectinib was not mutagenic *in vitro* in the bacterial reverse mutation (Ames) assay. Entrectinib was not clastogenic in the *in vivo* micronucleus assay in rats and did not induce DNA-damage in a comet assay in rats. A potential for abnormal chromosome segregation (aneugenicity) has been detected under *in vitro* conditions in cultured human peripheral blood lymphocytes (HPBL) but was not detected in the *in vivo* micronucleus assay in rats.

### 3.3.3 Impairment of Fertility

No fertility studies in animals have been performed to evaluate the effect of entrectinib. With the exception of dose dependent decreases in prostate weight in male dogs, no effects of entrectinib on reproductive organs were observed in the repeat-dose toxicology studies in rats and dogs at approximately 2.4-fold and 0.6-fold, respectively, the human exposure by AUC at the recommended human dose.

### 3.3.4 Reproductive toxicity

In an embryo-fetal developmental study in rats, maternal toxicity (decreased body weight gain and food consumption) and fetal malformations (including body closure defects and malformations of the vertebrae and ribs), were observed at 200 mg/kg/day of entrectinib, which represents approximately 2-fold the human exposure by AUC at the recommended dose. Lower fetal weights and reduced skeletal ossification were observed at exposures equivalent to 0.7 times the human exposure by AUC at the recommended dose.

### 3.3.5 Other

In a 13-week juvenile rat toxicology study from post-natal day 7 to day 97 (approximately equivalent to neonate to 16 years of age in humans), effects on growth and development were observed in the dosing and recovery phases including decreased body weight gain and delayed sexual maturation (at  $\geq 4$  mg/kg/day, approximately 0.1 times the human exposure by AUC at the recommended dose), deficits in neurobehavioral assessments including functional observational battery and learning and memory (at  $\geq 8$  mg/kg/day, approximately 0.2 times the human exposure by AUC at the recommended dose) and decreased femur length (at 16 mg/kg/day, approximately 0.3 times the human exposure by AUC at the recommended dose).

Entrectinib penetrates the CNS with brain-to-plasma concentration ratios of ~0.4 in mice, 0.6- 1.5 in rats and 1.4-2.2 in dogs following repeated oral daily dosing. Consistent with being a weak P-gp substrate, entrectinib demonstrated high retention in the CNS following IV infusion in rats, achieving sufficient steady-state concentrations in the brain to cover target pharmacological activity at clinically relevant systemic exposure. M5 was also detected in a brain homogenate in rats following a single oral dose or an IV infusion of entrectinib for 5-6 hours, but the exposures of M5 were lower than entrectinib in both plasma and brain in rats.

## 4. PHARMACEUTICAL PARTICULARS

### 4.1 STORAGE

#### Storage

Do not store above 30°C (86°F).

#### Shelf life

This medicine should not be used after the expiry date (EXP) shown on the pack.

### 4.2 SPECIAL INSTRUCTIONS FOR USE, HANDLING AND DISPOSAL

#### Disposal of unused/expired medicines

The release of pharmaceuticals in the environment should be minimized. Medicines should not be disposed of via wastewater and disposal through household waste should be avoided.

Any unused medicinal product or waste material should be disposed of in accordance with local requirements.

### 4.3 PACKS

Rozlytrek hard capsules are packaged in white high-density polyethylene bottles with desiccant and a child-resistant screw cap. 100 mg hard capsules are supplied in bottles of 30 capsules. 200 mg hard capsules are supplied in bottles of 90 capsules.

### Medicine: keep out of reach of children

Current at November 2021